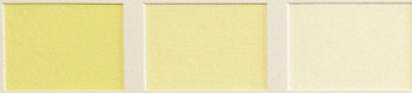
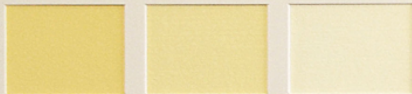


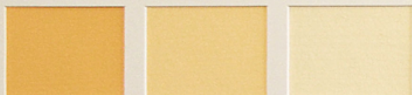
A B C



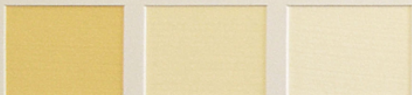
Spinellgelb (Art. 861)



Sonnengelb (Art. 867)



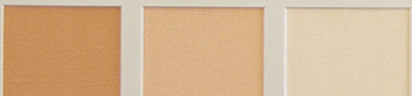
Spinellorange (Art. 865)



Goldocker, Italien (Art. 821)

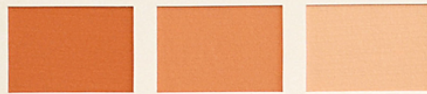


Ocker gelb (Art. 802)

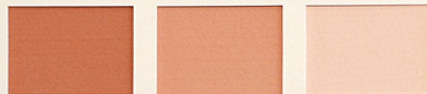


Orangeocker, Provence (Art. 822)

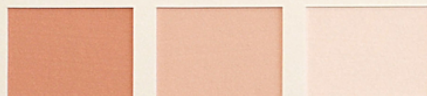
A B C



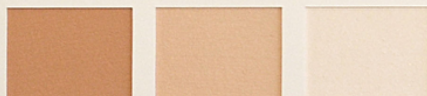
Oxidorange (Art. 823)



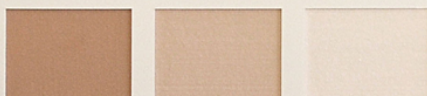
Siena rot, Italien (Art. 824)



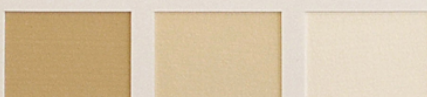
Ocker rot (Art. 803)



Umbr rötlich (Art. 808)



Umbr rotbraun, Italien (Art. 825)



Umbr rehbraun (Art. 805)

A B C



Umbr natur (Art. 915)



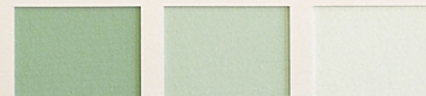
Umbr schwarzbraun (Art. 916)



Umbr dunkel, Ardennen (Art. 826)



Umbr grün, Zypern (Art. 827)



Umbr grünlich dunkel (Art. 807)



Spinellgrün (Art. 864)

A B C



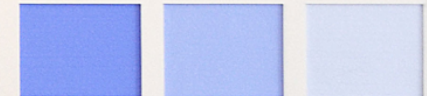
Spinellmint (Art. 868)



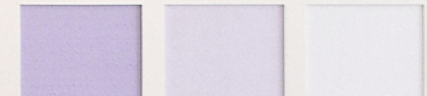
Spinelltürkis (Art. 862)



Spinellblau (Art. 863)



Ultramarin blau (Art. 855)



Ultramarin violett (Art. 856)



Eisenoxidschwarz (Art. 850)